

# OverCEM SA

# Overfibers Posts

## Features Advantages

- Active Adhesion System\*** Increases the adhesion with OverCEM SA
- Highly retentive surface** Increases the post/cement adhesion
- No silanization need** Time-saving and cost-effective
- Glass fibers** High flexure strength
- Balanced flexure E-modulus** To better stabilize the restoration
- Translucent** To accelerate the activation of the dual-cement
- Radiopaque** To be clearly distinguishable inside the canal
- Easy to remove\*\*** Safely with absolute certainty and without tooth damages



# OverCEM SA

Dual-Curing Self-Adhesive Resin Cement

- Self-Adhesive Innovative Formula
- Strong
- Dual-curing
- Auto-mixing T-Mixers tips
- Multi-purpose Luting cement



**SIMPLE STRONG RELIABLE**

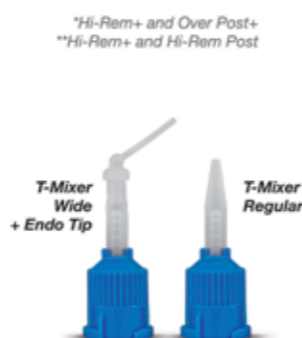
[www.overfibers.com](http://www.overfibers.com)

OverCEM SA Starter KIT  
OverCEM SA KIT  
OverCEM SA Refill  
T-Mixer Refill  
OverCEM SA & Overfibers Posts  
Overfibers Posts - Refill

CE 0425	OverCEM SA	T-Mixer Regular	T-Mixer Wide + Endo Tips					
SKOCS	OverCEM SA Starter KIT	1 Translucent 9,5g syringe 1 Universal 9,5g syringe 1 Opaque 9,5g syringe	24 T-Mixer Regular	15 T-Mixer Wide + 15 Endo Tips				
KOCT	OverCEM SA Translucent KIT	3 Translucent 9,5g syringe	24 T-Mixer Regular	15 T-Mixer Wide + 15 Endo Tips				
KOCU	OverCEM SA Universal KIT	3 Universal 9,5g syringe	24 T-Mixer Regular	15 T-Mixer Wide + 15 Endo Tips				
KOCO	OverCEM SA Opaque KIT	3 Opaque 9,5g syringe	24 T-Mixer Regular	15 T-Mixer Wide + 15 Endo Tips				
ROCTR	OverCEM SA Translucent	1 Translucent 9,5g syringe	8 T-Mixer Regular	5 T-Mixer Wide + 5 Endo Tips				
ROCUN	OverCEM SA Universal	1 Universal 9,5g syringe	8 T-Mixer Regular	5 T-Mixer Wide + 5 Endo Tips				
ROCOP	OverCEM SA Opaque	1 Opaque 9,5g syringe	8 T-Mixer Regular	5 T-Mixer Wide + 5 Endo Tips				
TMREG	OverCEM SA T-Mixer Regular	25 T-Mixer Regular						
TMWE	OverCEM SA T-Mixer Wide + Endo Tip	15 T-Mixer Wide + 15 Endo Tips						
SKOCH+	OverCEM SA - Hi-Rem+	1 Translucent 9,5g syringe	8 T-Mixer Regular	5 T-Mixer Wide + 5 Endo Tips	20 Posts	Hi-Rem+	4 Drills	
SKOCHP	OverCEM SA - Hi-Rem Prosthetic Post	1 Translucent 9,5g syringe	8 T-Mixer Regular	5 T-Mixer Wide + 5 Endo Tips	20 Posts	Hi-Rem Post	4 Drills	
SKOCP+	OverCEM SA - Over Post+	1 Translucent 9,5g syringe	8 T-Mixer Regular	5 T-Mixer Wide + 5 Endo Tips	20 Posts	Over Post+	4 Drills	
SKOCP	OverCEM SA - Prosthetic Over Post	1 Translucent 9,5g syringe	8 T-Mixer Regular	5 T-Mixer Wide + 5 Endo Tips	20 Posts	Over Post	4 Drills	

Hi-Rem+		Hi-Rem Prosthetic Post		Over Post+		Prosthetic Over Post		Drill	
CODE	Description	CODE	Description	CODE	Desc.	CODE	Description	Size Ø	CODE
RHP600	10 Hi-Rem+ 0	RPOP100	10 Hi-Rem Prosthetic Post 0	PP700	10 Over Post+ 0	POP100	10 Prosthetic Over Post 0	0.70 - 1.20	PD100
RHP601	10 Hi-Rem+ 1	RPOP101	10 Hi-Rem Prosthetic Post 1	PP701	10 Over Post+ 1	POP101	10 Prosthetic Over Post 1	0.80 - 1.40	PD101
RHP602	10 Hi-Rem+ 2	RPOP102	10 Hi-Rem Prosthetic Post 2	PP702	10 Over Post+ 2	POP102	10 Prosthetic Over Post 2	0.80 - 1.60	PD102
RHP603	10 Hi-Rem+ 3	RPOP103	10 Hi-Rem Prosthetic Post 3	PP703	10 Over Post+ 3	POP103	10 Prosthetic Over Post 3	0.90 - 1.80	PD103
						POP104	10 Prosthetic Over Post 4	1.10 - 2.10	PD104



5 Posts for each size 0-1-2-3  
1 Drill for each size 0-1-2-3

Overfibers S.r.l.  
Via E. Malatesta,7 - 40026 Imola (BO) - Italy  
Phone +39 0542 52 153 - Fax +39 fax 0542 190 00 78  
[www.overfibers.com](http://www.overfibers.com) - [info@overfibers.com](mailto:info@overfibers.com)



30 07 2020

## Self-Adhesive Innovative Formula

Excellent bond strength stable over time

## Strong

High Mechanical Properties

## Dual-curing

Guarantees high polymerization efficiency

## Auto-mixing

### T-Mixer

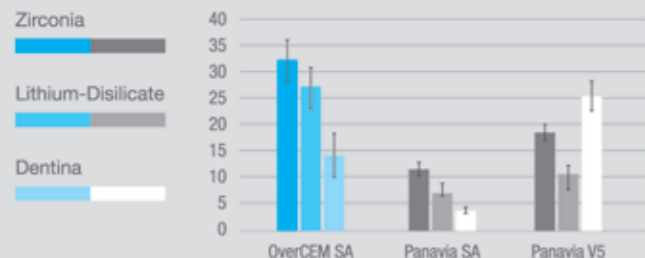
-30% cement waste compared to conventional helix mixing tips

## Multi-purpose Luting cement

Zirconia, Ceramics, Metals, Lithium disilicate, Posts, Composites

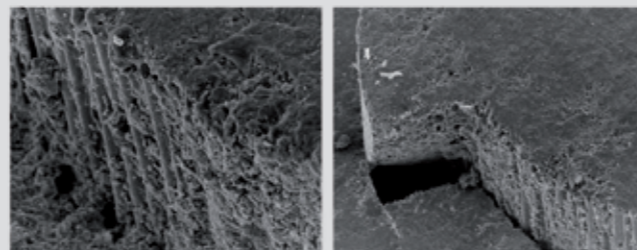
## Excellent bond strength to Zirconia and Lithium-disilicate ceramics

OverCEM SA reaches among most high bonding values of cements to Cubic-zirconia and Lithium-disilicate ceramics and optimal to Dentin.



BOND STRENGTH OF DIFFERENT RESIN-CEMENTS TO DENTIN: A PRELIMINARY STUDY C. Parisi\* 1, P. Baldissara 1, T. Greischberger 1, A. Casamenti 1, L.F. Valandro 2, C. Monaco 1 (1 University of Bologna, Italy, 2 Federal University of Santa Maria, Brazil)

## Outstanding Adhesion to Hi-Rem+ and Over Post+ fiber posts!

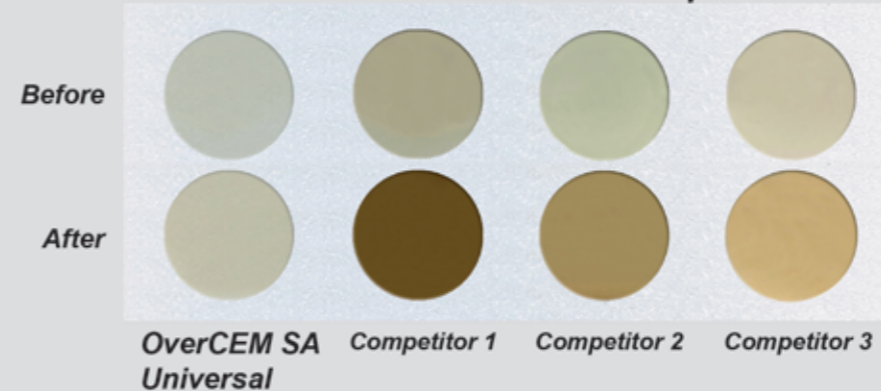


The cement/post interface showed high push-out shear forces: the adhesion between **Hi-Rem+** and **OverCEM SA** is increased thanks to the innovative **Active Adhesion System** contained in the post's resin matrix, and the extreme micro-roughness of its surface, greater than 5.0 microns (Ra).

**OverCEM SA** cement also showed a strong adhesion to the dentin, the micrograph shows the balanced adhesion between the two interfaces: cement/dentin and cement/post.

## High chromatic stability for outstanding aesthetics

OverCEM SA has the lowest absorption result



Even after 3 days at 37°C in concentrated coffee OverCEM SA color changing is negligible in comparison to other SA cements

Source Overfibers internal data

## Features

## Advantages

T-Mixer the smallest on the market

Less cement waste in mixing tip

Ideal consistency

More practical

No etching - No priming - No bonding

Time and money saving

Easy removal of excess

Faster use

No post-operative sensitivity

No discomfort for the patient

Strong and moisture-tolerant

Longer stability in time

## Indications for use

OverCEM SA  
Specific when you need

### STRONG ADHESION

	Crowns	Bridges	Implant prosthodontics (Screwed metal-bonded)	Veneer crowns	Inlays/Onlays	Posts and dowels
Metal	●	●	●		●	●
Glass-ceramics	●	●	●	●	●	
Zirconia	●	●	●	●	●	●
Composites	●	●	●	●	●	●
Titanium Ceramic, Co-Cr Ceramic (implant prosthodontics)	●	●	●			